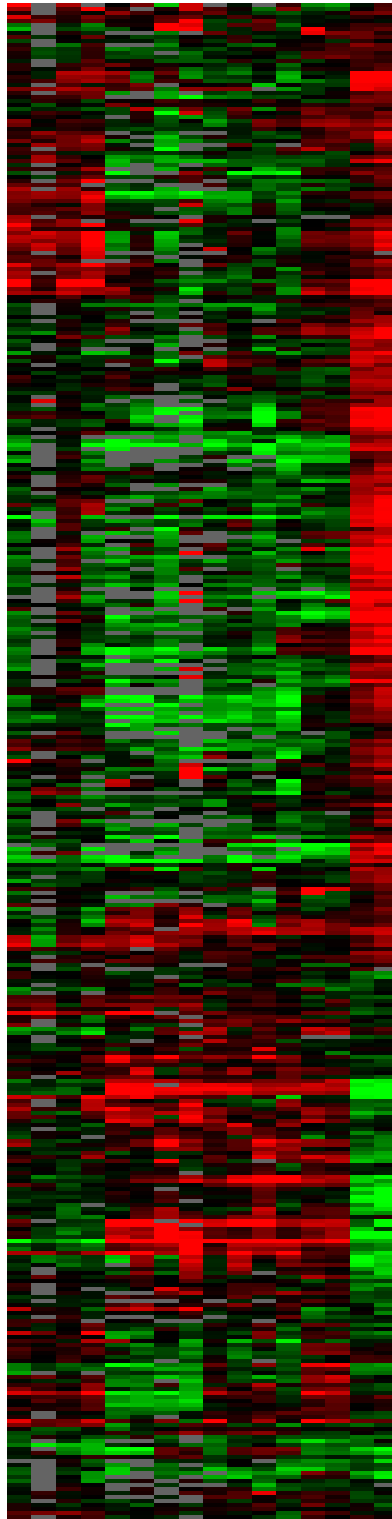
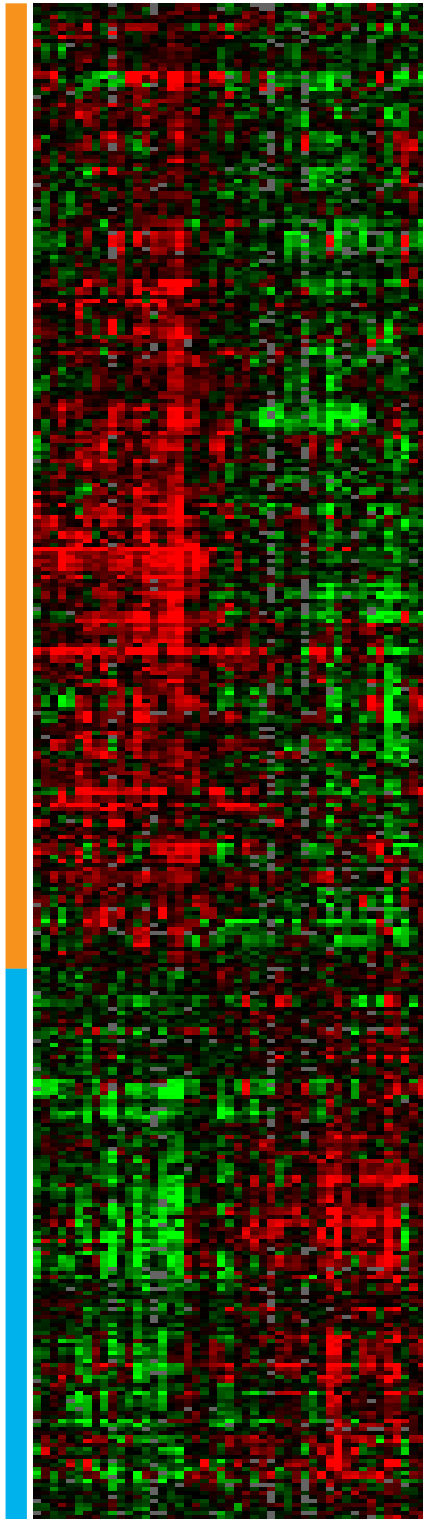


Resting Blood B Activated Blood B GC B



- = spi-1=PU.1
- = CD86=B7-2
- = RAD50
- CD21
- Germinal center kinase
- Casein kinase I, γ 2
- Diacylglycerol kinase delta
- Arachidonate 5-lipoxygenase
- CD22
- JNK3
- Myosin-IC
- KCNN3 Ca⁺⁺ activated K⁺ channel
- PI3-kinase p110 catalytic, γ isoform
- WIP=WASP interacting protein
- JAW1
- APS adapter protein
- Protocadherin 43
- Terminal deoxynucleotide transferase
- Focal adhesion kinase
- BCL-7A
- BCL-6
- FMR2
- A-myb
- CD10
- OGG1=8-oxyguanine DNA glycosylase
- LMO2
- CD38
- CD27
- lck
- IRS-1
- RDC-1
- ABR
- OP-1
- RGS13
- PKC delta
- MEK1
- SIAH-2
- IL-4 receptor alpha chain
- APR=PMA-responsive peptide
- GADD34
- IL-10 receptor beta chain
- c-myc
- NIK ser/thr kinase
- BCL-2
- MAPKK5 kinase
- PBEF=pre-B enhancing factor
- TNF alpha receptor II
- Cyclin D2
- Deoxycytidylate deaminase
- IRF-4
- CD44
- FLIP=FLICE-like inhibitory protein
- SLAP=src-like adapter protein
- DRIL1=Dead ringer-like 1
- Trk3=Neurotrophic tyr kinase receptor
- IL-16
- SP100 nuclear body protein
- LYSP100
- K⁺ channel,shaker-related,member 3
- ID2
- NET tyrosine kinase
- IL-2 receptor beta chain

1 2 3 4 5 6 7 8 9 10 11 12 13 14 15 16